



FlexKrete Technologies

A div. of Protective Products, Inc.

"You won't believe it until you see it!"

IBTTA
International Bridge, Tunnel and Turnpike Association



FLEXNEWS

WAL-MART

www.flexkrete.com

OCTOBER, 2006

RECENT NEWS

September 18-20th, we attended the **INTERNATIONAL BRIDGE, TUNNEL & TURNPIKE ASSOCIATION (IBTTA)** convention in Dallas. There were folks there from many parts of the world, and, as usual, we had lots of enthusiastic visitors, as well as happy customers, at our booth. Among many others, some of the visitors were:

FlexKrete has been used on the **Golden Gate Bridge** for close to a year now. Bridge management has continually expressed great satisfaction, and indicates that there will be many more orders to come. **New York State DOT** has spread the news of FlexKrete to all of their district offices, state-wide, and an aggressive follow-up demo/training program has begun. As with all states, they will soon experience the true value and savings of FlexKrete bridge and roadway repair! **Wal-Mart** is now specifying FlexKrete for their facilities. **North Texas Tollway Authority** has been repairing with FlexKrete for 4-5 years. **TXDOT** first tested our product approximately 5 years ago, and continues to utilize FlexKrete more and more, because it works for the long-term! Our business is growing in Canada, and we now are in negotiations with several very large customers for overseas expansion.



(Our distributors use the FlexKrete 10'x10' display booth free of charge. If there are any upcoming shows in which any of you would like to participate, be sure to reserve this booth as early as possible. It is currently in use at Omaha, Nebraska)

RECENT JOBS



The Tollway Authority dismantles the old treadles at the tollway booths and fills them with FlexKrete, for a quick and effective fix, without cutting out.



A toll booth step was also put to traffic in 10 minutes!



At Wal-Mart, badly deteriorated joints are repaired with FlexKrete, re-cut and filled with joint filler.

All of the 12' x 30' toll booth lanes are scheduled to be covered with FlexKrete. The depth of the repair is as much as 5" to 6", with a deep arc in the center.



TIPS FROM THE FIELD

FLEXTEMP: We have literally put vehicular traffic on FlexKrete in 10 minutes with the use of FlexTemp. It has become vital where quick repairs are important, or to get the workers away from dangerous spots as quickly as possible.

Always mix the standard catalyst into the liquid first, THEN, add FlexTemp and mix, BEFORE the aggregate is added.

WARNING: NEVER MIX THE FLEXTEMP WITH THE CATALYST—MIX THEM INTO THE FLEXKRETE LIQUID SEPARATELY, OR A THERMAL REACTION COULD OCCUR.

The longer you mix the catalyst, the quicker the set time. In warm weather, if the catalyst is mixed for 30 seconds and the FlexTemp is mixed 15 seconds, the set time will be very quick. In cooler, or cold weather, mix time can be increased for quicker set times.

FUMED SILICA: For verticals, we typically say that 2 parts fumed silica + 2 parts sand, added to 1 part FlexKrete (catalyzed) is a good formula. This creates a “dough-like” consistency, and can be ideal for shoving it in place with the hand, and then forming it with a trowel. However, by decreasing the amount of sand you will lighten the load and also make it less stiff. For instance, 1 part sand + 2 parts fumed silica, added to 1 part FlexKrete can be applied directly overhead at great thicknesses. We have applied overhead before at 4” thick. Since the configurations into which the material is applied will vary, experiment with the proportions that may be best for you. For example, 1 part fumed silica mixed into 1 part catalyzed FlexKrete, makes a powerful adhesive that can be squeegeed onto the surface. We have set tile in this manner. Also remember to let the primer “tack” up well. The “tackier” it is, means that the adhesion for the FlexKrete mix will be greater.

NOTE: A great way to get the FlexKrete primer to “tack” up quickly, is to add a small amount of FlexTemp into the mix.

FLEXPRIME: This unique product is now in wide-spread use because it will block moisture, seal corrosion, is easy to use, the coverage rate is super, and is also less expensive. FlexPrime also penetrates deeply into the substrate to create a very powerful bond. We now recommend FlexPrime as the bond coat on all broadcast systems, followed by a full coat of FlexKrete, then the aggregate. This should usually be a double broadcast, i.e., FlexPrime, FlexKrete, aggregate, FlexKrete, aggregate, then, FlexSealer. Normally, FlexPrime should not be used below 45° F. as it will take way too long to cure, or, it may not cure at all.

EXCEPTION: At the entrance of a warehouse that was 0°F, there were (typical) joint breaks. Use weed burner (large torch) to heat the concrete and remove the moisture. Have FlexPrime mixed and ready to apply. When the concrete is hot, dry and clean, quickly brush FlexPrime onto surface. Repair with FlexKrete and FlexTemp while surface is still warm. Our patch worked great and set up in about 15 minutes. It accepted forklift traffic immediately, still looks excellent, and the customer has done more repairs like it since that time.

CONCLUSION: If you heat the concrete, FlexTemp will do a super good job for you, as will the FlexKrete/FlexTemp.



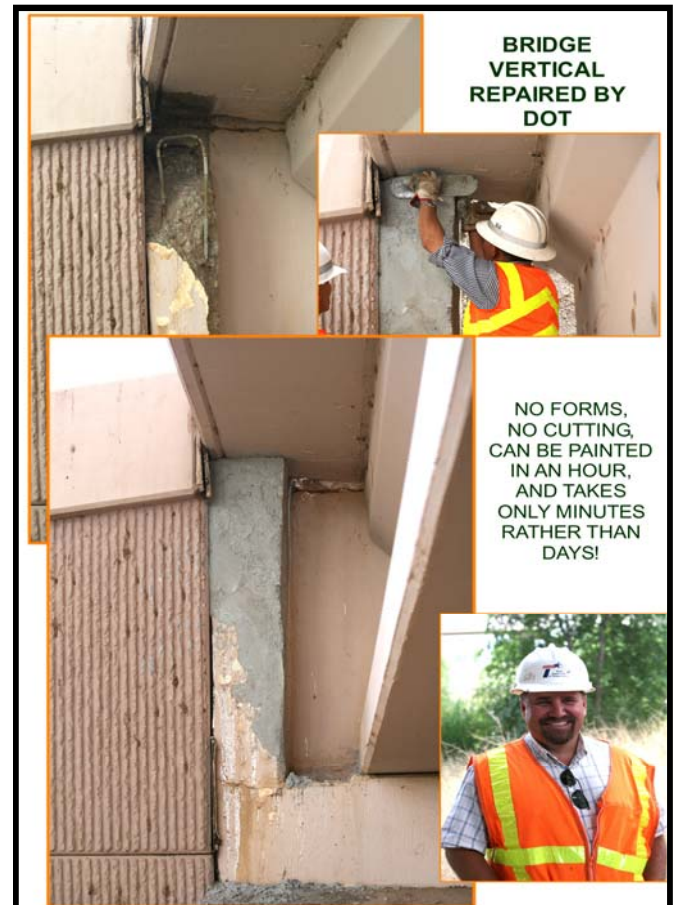
IT REALLY IS AS EASY AS 1-2-3!

FIRST TIME HE USED IT, this D.O.T. employee was truly amazed at how much FlexKrete material he could apply on a vertical in one pass, and how easy it was. He has been used to applying a thin coat, waiting an hour, and doing this for as much as five coats, **YES, 5 COATS, YES, 5 HOURS!** When he finished this small repair with FlexKrete in one pass, (maybe 5 minutes), he and the crew told the boss that they needed FlexKrete because it would save an enormous amount of time. Not only does it make the job easier, but you can get so much more accomplished in much less time, with much less equipment, AND, WITHOUT BLOCKING TRAFFIC FOR SUCH A LONG PERIOD OF TIME.

Get on the job, get it finished, and get out of that dangerous traffic ASAP.....and make everybody happy!

OTHER RECENT JOBS

Repair verticals, as well as overheads—As much as 6" in one pass.





FlexKrete
Technologies
"You won't believe it until you see it!"



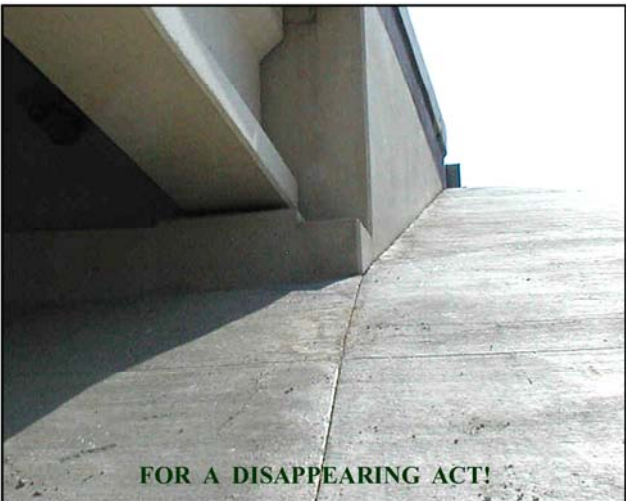
TROWEL



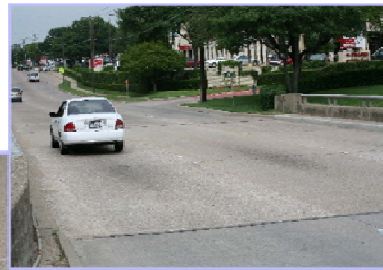
PAINT IN 1 HOUR



TROWEL FlexKrete Technologies FLUSH TO SURFACE,



FOR A DISAPPEARING ACT!



FlexKrete
Technologies
"You won't believe it until you see it!"



**BRIDGE DECK
OVERLAY**

**TRAFFIC IN
ONE HOUR!**



FlexKrete
Technologies
A div of Proactive Products, Inc.

"You won't believe it until you see it!"

**FlexKrete 102 works long-term!
it's quick, easy to use and economical!
Less than \$18. per mixed gallon!**

STREET EXPOSURE



- REPAIRED ALMOST 6 YEARS AGO!
- MT'L COST, APPROX. \$18.
- TRAFFIC LESS THAN 1 HOUR.

RETURN TO TRAFFIC IN 15 MINUTES, TODAY!



**STILL IN
PERFECT
CONDITION
AFTER NEARLY
6 YEARS!**

**One 5 gallon pail of
FlexKrete yields approx.
20 gallons of mixed
product.**

FlexKrete ***Technologies*** A div of Protective Products, Inc.

"You won't believe it until you see it!"



FlexKrete 102: Used to repair concrete, wood, asphalt, or steel.

One 5 gal. pail yields approx. 20 gallons of mixed material.
Mix 3½ parts blast sand with 1 part catalyzed FlexKrete and trowel into place. Aluminum Oxide, color quartz, black beauty, steel granules, or other aggregate may be used for desired results.

Five gallons includes catalyst and measuring bottle. \$350.



FlexPrime: Used as prime coat over damp concrete, green concrete, or rusty steel.

Mix equal parts A & B, then brush or roll on thin coating.

Coverage is 300-400 square feet per gallon.

Packaged in 2 & 10 gal. kits

2-Gallon Kit- \$110.



Fumed Silica: Used with FlexKrete for vertical or overhead repair.

Mix 2 parts fumed silica and 2 parts blast sand with 1 part catalyzed FlexKrete to produce a dough-like material, which can be "gloved" into voids and troweled smooth. Less fumed silica and less sand can produce a thin, material which can be squeegeed over a surface and into cracks.

Packaged in 10 lb. bags. \$75.



FlexTemp: Mixed into catalyzed FlexKrete to speed up set-up time.

Used in cold rooms or cold weather or to allow traffic quickly. A very small amount (shown on bottle label), will allow FlexKrete to set-up in 1-2 hours at 0°F.

One 5 oz. bottle will catalyze five gallons of FlexKrete. \$15.



FlexSealer 1000: Re-nues color and protects faded paint on equipment, machinery, buildings and other metal structures.

Used to seal concrete, stone, wood, masonry products, fiberglass, and as a clear sealer for stamped concrete, epoxy stone and other decorative systems.

Coverage: 100-300 square feet per gallon, depending on substrate.

Packaged in 5 gallon pails. \$275.